

aquastep<sup>®</sup>

## AQUASTEP TILES – INSTALLATION INSTRUCTIONS



### SPC vinyl tiles for floors and walls

Keep the tiles at room temperature (between 18°C and 24°C) for at least 48 hours before you start the installation.

SPC vinyl tiles can be installed on underfloor heating but the surface should not exceed 27°C.

The tiles are briefly resistant to temperatures up to 75°C.

The tiles should not be constantly exposed to higher temperatures, installation in a conservatory for example is not recommended.

**Aquastep Tiles are only suitable for use indoor and should be installed and stored in a room that is heated.**

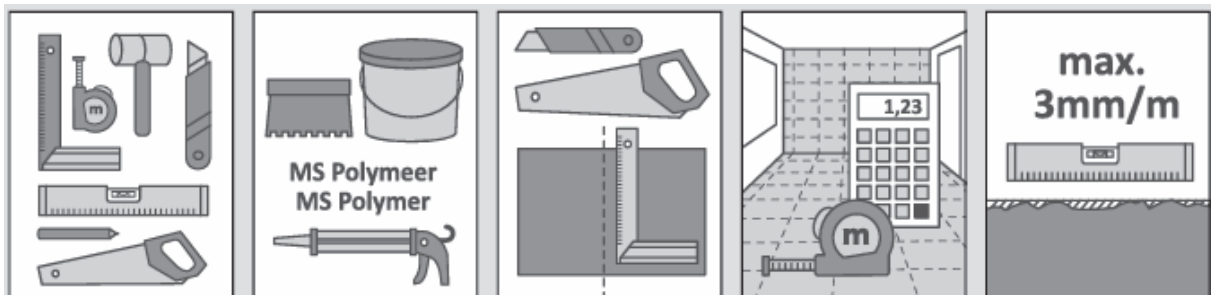
### INSTALLATION INSTRUCTIONS

#### FLOOR AND WALL INSTALLATION

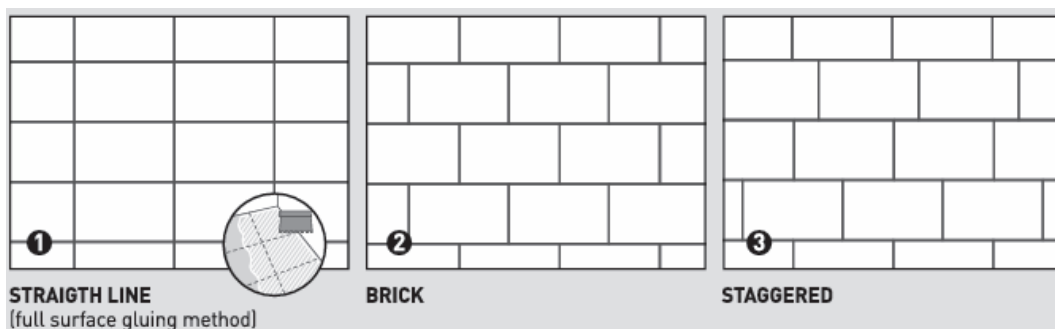
The following tools are needed: a plastic hammer, set square, tape measure, spirit level, glue gun or glue comb, glue (MS polymer), saw or Stanley knife and a pencil.

The subfloor must be dry, pressure resistant and free from dust and dirt. Check the wall/floor for flatness. The unevenness should not exceed 3 mm under a straight ruler of 2 meter, even up if necessary.

Tile joints should be no more than 6 mm wide. If a click joint is right on top of a tile joint, the joint should be levelled.

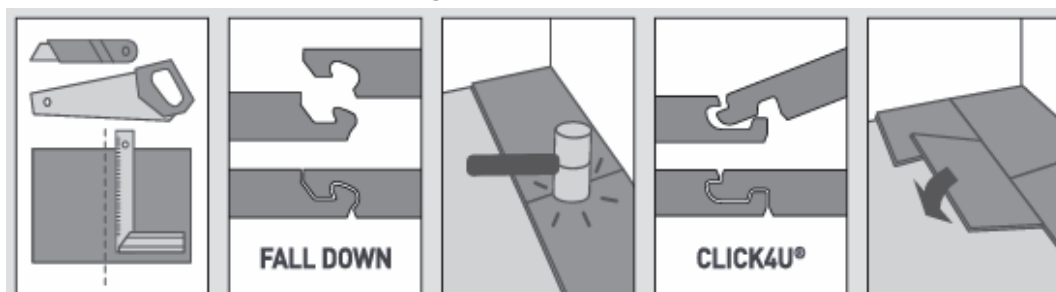


Measure the wall/floor and make a drawing to divide the tiles nicely over the surface. The tiles can be installed in a straight line ❶, brick ❷ or staggered ❸ (overlap minimum of 30 cm) pattern.



Inspect the tiles before installation for visible defects. Tiles with visible defects should not be installed. After installation a claim will not be accepted.

On the long side of the tiles there is a click joint, on the short sides a Fall-down. To join 2 tiles, place the tongue of one tile into the groove of another tile under an angle, move the tile towards the butt end of the previous tile and push it down. Tap it with a hammer carefully over the whole width until the short sides click together.



Tiles can be cut to size using a try square and a Stanley knife. The tile is cut and then broken over the breaking line.



## LAYING THE FLOOR

### 1 FULL SURFACE GLUING METHOD

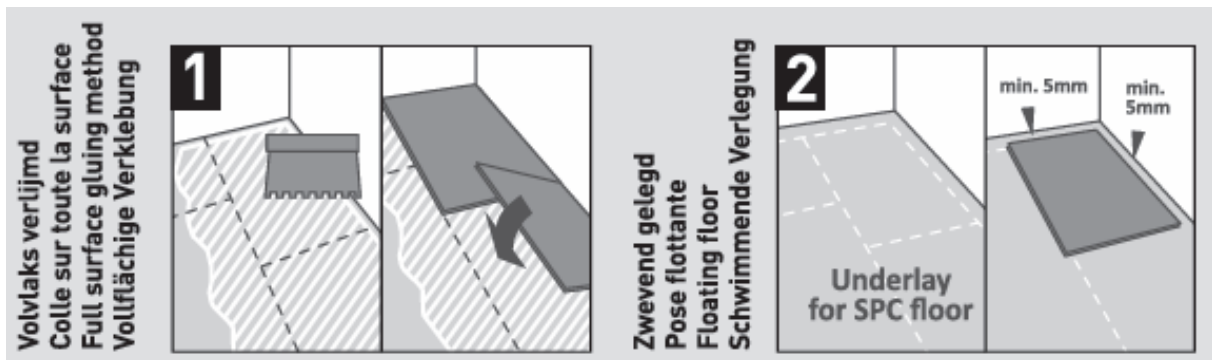
Use Aquastep MS polymer adhesive and apply it with a glue spreader comb (check the packaging for the right spreader). First degrease the subfloor and the back of the tiles.

### 2 AQUASTEP TILES ARE SUITABLE FOR LAYING IN A FLOATING MANNER

It is recommended to lay a sound absorbing barrier suitable for SPC floors. Leave a 5 mm expansion gap open on all sides when the length/width of the floor does not exceed 5 meters. For a longer/wider floor, add 1 mm per linear meter. The maximum floor length without expansion joint is 12 x 8 meter. Fix the first row with distance wedges on the wall. The first row is laid with the tongue of the long side of the tile facing the wall. Always click the tongue into the groove.

When the tiles are installed in a straight line and/or in rooms with humid conditions we recommend the full surface gluing method.

The tiles cannot be placed on the floor in the shower corner, use a shower tray there.



### INSTALLATION ON THE WALL

First degrease the wall and the back of the tiles.

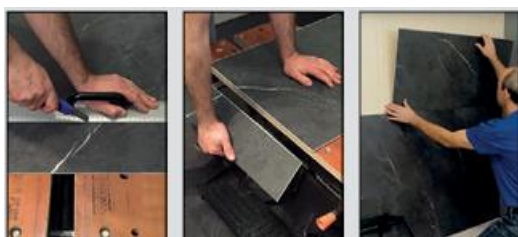
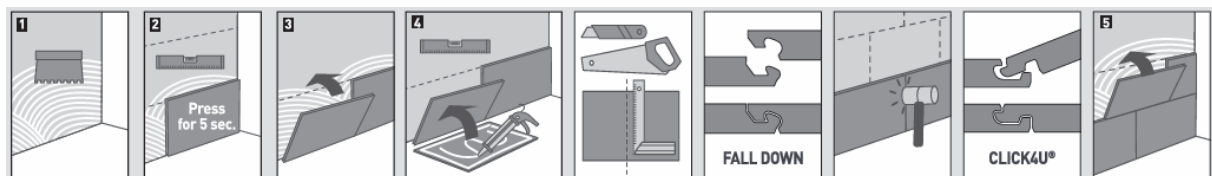
Take a ruler and a spirit level and draw a reference line with a pencil before starting the fitting.

Press the tile for 5 seconds after fitting. Keep a cleaning product at hand for removing excess glue. Start the installation at the bottom and work from right to left always clicking the tongue in the groove.

**Option 1:** apply the MS polymer adhesive with a glue comb on the wall (picture 1-3).

**Option 2:** apply the adhesive with a cartridge gun on the back of the tile around and in the middle as shown in picture 4. When fitting on a plaster board base make sure the joints of the tiles do not coincide with the seams of the plaster boards.

Place the first tile in the bottom right corner. Fit the tiles of the first row one-by-one with the short sides together. Install the next row as described above. Check after every row if the joints are perfectly aligned and the tiles are still level, before the adhesive is dry. Once the two first rows have been fitted, fit the other tiles row by row.




## FINISH AND MAINTENANCE

Holes for piping, screws or joinings: drill the holes first in the panels before glueing them. Use an appropriate tool. The diameter of the holes must be at least 10 mm larger than the hose or joining. Fill the hole up with moisture resistant silicone after fixing the panels.

For finishing use a moisture resistant silicone or a suitable profile which is glued onto the panels. For external corners use a suitable profile. For finishing in a shower use a moisture resistant silicone between wall and shower tray. For finishing the ceiling use silicone or a suitable profile which is glued onto the panels.

Clean the panels with a moist cloth. Use a vacuum cleaner suitable for hard surface floors, a soft brush, or an active fibre dry mop. Never clean the surface of the panels with polish, wax, varnish, bleach, scouring pads, wire wool, abrasives, or cleansing agents that contain abrasives or bleach. The use of a steam cleaner is not recommended for these floors.

[www.dumaplast.com](http://www.dumaplast.com)

|   |  |                    |
|---|--|--------------------|
|  | DUMAPLAST NV, Vliegplein 41, 9991 Maldegem <b>17</b> |                    |
|   | ZY_SPC_A51020-001                                    | EN 14041:2008      |
|   | SPC panels for floor covering                        |                    |
|   | Reaction to fire                                     | B <sub>f</sub> -s1 |
| <b>0766</b>   | Sliding behaviour                                    | OS                 |

MADE IN PRC

**aqua•step®**  
100% WATERPROOF